


**Ofsted Rated: Good**



***Founded in Faith  
Focused on Family  
and Fulfilling  
Future Potential***





*"Parents appreciate the warm and nurturing environment of the school. As one parent commented, 'The staff have created a "family" atmosphere and make it a wonderful place for our children to grow.'"*

*– Ofsted*



el

# Welcome to St Mary's Farnham Royal

*Our core purpose is to equip children well for the future. We want to fill the world with happy, confident, well mannered, proud community members who have high standards and are respectful of Christian values and of other's differences.*

With only 25 children per class, everyone knows each other at SMFR and there is a strong sense of 'Family'. Knowing each child well enables staff to tailor teaching and support to individual children needs.

As a church school we are proud of our Christian 'Faith'. Our core moral values such as, 'Be Kind', 'Do to others as you would have them do to you', are shared by everyone within our community, no matter what their faith. They are integral to ensuring that the school provides a safe, friendly

environment where both childrens and adult's well-being is valued and nurtured

We strongly believe that it is our role to prepare children for the 'Future'. Children learn if they are happy, nurtured and cared for.

SMFR is a very special place to be and that is why our children 'Flourish'

Mrs Vania Eaglen,  
Headteacher

→



# Our History

Driving down the A355 from the M40 at Beaconsfield to Slough, you pass through the parish of Farnham Royal and you could be forgiven for thinking there is little history. However, hidden at the end of Church Road, since 1875, is St Mary's Farnham Royal Church of England Primary School.

Sitting proudly opposite the 13th Century St Mary's Church, both the school and church have much history and tradition. Easter bonnet parades, carol services, Mother's Day and the Harvest Festival are family events that fill the calendar year upon year. Many of these are referred to in the school's Victorian records which can still be found in the Headteacher's office.



*"Staff have high expectations of pupils' behaviour. Consequently, pupils work hard in lessons, listen attentively and learn well together." – Ofsted*



## Behaviour

Visitors to the school always comment on the positive atmosphere and the polite children. Our high expectations of behaviour are reinforced through the learning behaviours we value:

- Kindness
- Resilience
- Perseverance
- Bravery
- Focus





*"Excellent communication with parents and very good teaching. Nice atmosphere, much more appealing than sending child to a larger school." – Parent*









## Early Years Foundation Stage

**Early Years Foundation Stage (EYFS) welcomes Nursery children from age 3 and accepts both 15hr and 30hr funding.**

Two small Reception classes (25 per class) work alongside the nursery. The EYFS children benefit from their own classrooms and playground, yet they are very much part of the school.

EYFS children wear the school uniform and participate in whole school and community events, such as the Nativity, Aspirations Day and Sport's Day. The children follow a curriculum based on the seven areas of learning. In addition to this they learn phonics, receive homework to complete with their family and are expected to read at home on a daily basis.

Children develop a sense of belonging during their initial years and thrive as EYFS prepares them for KS1. They benefit from remaining part of the school until they move on to secondary school.



## GLD Results

(Good Level of Development)

2017



St Mary's = 75%  
National Average = 71%

2018



St Mary's = 83%  
National Average = 72%

○ St Mary's    ○ National Average

# Key Stage 1



Key Stage 1 consists of Years 1 and 2; four classes with 25 children per class. KS1 focuses on teaching the core skills and knowledge children need, to enable them to achieve well in KS2 and reach their full potential.

Children receive up to five lessons a day, including weekly Music and Sports delivered by specialist teachers. Trips and visitors enhance the curriculum, providing many opportunities for children to extend their learning throughout the school year.

A variety of homework is provided for children to complete with their family and they are expected to read at home on a daily basis.

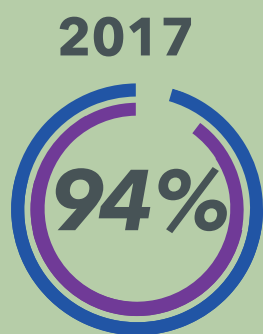


*"The headteacher and all members of staff go above and beyond to ensure that the children begin their journey to academic and personal success well. I would recommend the school without hesitation."*  
– Parent

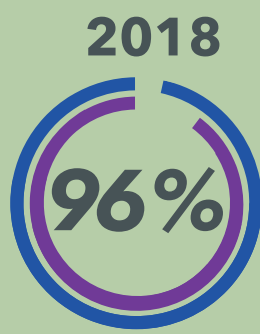


## Phonics Pass Rate

○ St Mary's  
○ National Average



St Mary's = 94%  
National Average = 91%



St Mary's = 96%  
National Average = 92%







## Key Stage 2

In Key Stage 2 one of our goals is to prepare children for life beyond primary school. There are two class per year group and class sizes remain small, 25 children per class. This ensures staff can tailor learning to each child's needs and foster a continued love of learning based on their individual interests. The curriculum is broad and balanced, including Swimming, Music, Sports and French, delivered by specialist staff. Children receive homework to complete with their family and are expected to read at home on a daily basis.

Trips and visitors provide many opportunities for children to extend their learning and explore their passions throughout the school year. A week long Residential in Year 6 enhances children's self confidence, independence and team building skills, as they try new activities such as sailing, canoeing, abseiling and climbing. These life skills prepare them well as they move onto secondary school.



*le*



# Music, Sport and Languages

***Specialist staff teach Music and French across the school ensuring children also flourish in these subjects.***

The school also benefits from a specialist Sports Coach who teaches across the school. Children learn through the schools bespoke curriculum a variety of sports such as; golf, cricket, football, tennis, rugby, swimming and basketball. The school proudly hosts external sports coaches, sporting events and clubs, as well as its annual Sport's Day when the School Houses; Farnham, Eton, Stoke and Windsor compete.

Music is taught across the school by both the school's specialist music teacher and external providers. Children with a passion for performing arts benefit hugely from the school's annual 'Music and Arts Night'

## ***Specialist support***

The school has a dedicated Pastoral Support Leader with experience in well-being, mental health, counselling and behaviour. Families and children feel well supported at SMFR.

Specialist Educational Needs and Disabilities are supported by the school's full time SENDCo. Our experienced SENDco is able to assess children's needs and work with teachers to ensure the best tailored provision possible.

The school's unique curriculum supports all children. It reinforces our values through the teaching of knowledge and skills. It prepares children for life as local and global citizens. Our curriculum can be found on the school's website: [www.stmarysfarnhamroyal.org](http://www.stmarysfarnhamroyal.org)







## Next Steps

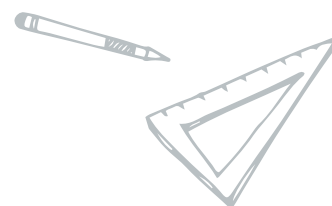
### Secondary Schools

Our children successfully transfer to a range of secondary schools including:

- Burnham Grammar
- Hershel Grammar
- Bayliss Court
- Beaconsfield High
- Beechwood School
- Khalso Secondary School
- Chalfont Community College
- Wexham Secondary School

### Secondary Transfer Tests *(Previously known as the 11+)*

SMFR is a Buckinghamshire school and as such we host the 'Secondary Transfer Tests,' for our pupils. Year 6 children benefit from sitting this test in a familiar environment with staff who know them well.





# Additional Support

## **Wrap Around Care**

'Tree Tops Club' provides parents with cost effective child care. before school from 7:30am and after school until 5:30pm. The provision is essential for working parents/carers, who are reassured their children are being cared for by a familiar team of school staff.

## **Kiss and Drop**

The school opens for all children at 8:30am each day. Whilst lessons don't start until 8:50am, children are supervised on the playground to enable parents to 'Kiss & Drop'.

## **Admissions**

Although class sizes are small, the school still welcomes children who live outside of the catchment area, including those who live in other counties such as Slough, Maidenhead and beyond. The school's admissions policy can be found on the school website.

***Come for a visit and see for yourself the unique environment of SMFR; call 01753 644 471 or email [office@smfr.co.uk](mailto:office@smfr.co.uk)***

*"The pupils are genuinely amazing, what a FANTASTIC school St Mary's really is...  
You really stick to your school values"  
– Parent*

St Marys Farnham Royal  
Church of England Primary School  
Church Road  
Farnham Royal  
SL2 3AW

Tel: 01753 644 471  
Email: [office@smfr.co.uk](mailto:office@smfr.co.uk)

[www.stmarysfarnhamroyal.org](http://www.stmarysfarnhamroyal.org)

